



Assessing the Feasibility of Impact-Based Forecasting For Seasonal Influxes of Sargassum Seaweed on the Coastlines of Caribbean Small Island Developing States (SAR for Sargassum)

Grahame Niles

Remote Sensing and GIS Specialist

Caribbean Institute for Meteorology and Hydrology

24/10/2019





Agenda

- Introduction
- The Sargassum Threat
- Trending Sargassum Early Warning Methodologies
- The CIMH Proposal
- Preliminary Research Results
- Next Steps
- Research Challenges
- Summary



Introduction

The Caribbean Institute for Meteorology and Hydrology

- WMO Regional Training Centre
- Centre for Research in Meteorology, Hydrology and Climatology
- Regional Data Centre
- Regional Instruments Centre
- Regional Centre of Excellence in Satellite Meteorology
- Advisor to regional governments

Introduction

“... to assist in improving and developing Meteorological and Hydrological Services as well as providing the awareness of the benefits of Meteorology and Hydrology for the economic well-being of the CIMH member states. This is achieved through ***training, research, investigations and the provision of related specialized services and advice***”.



The Sargassum Threat

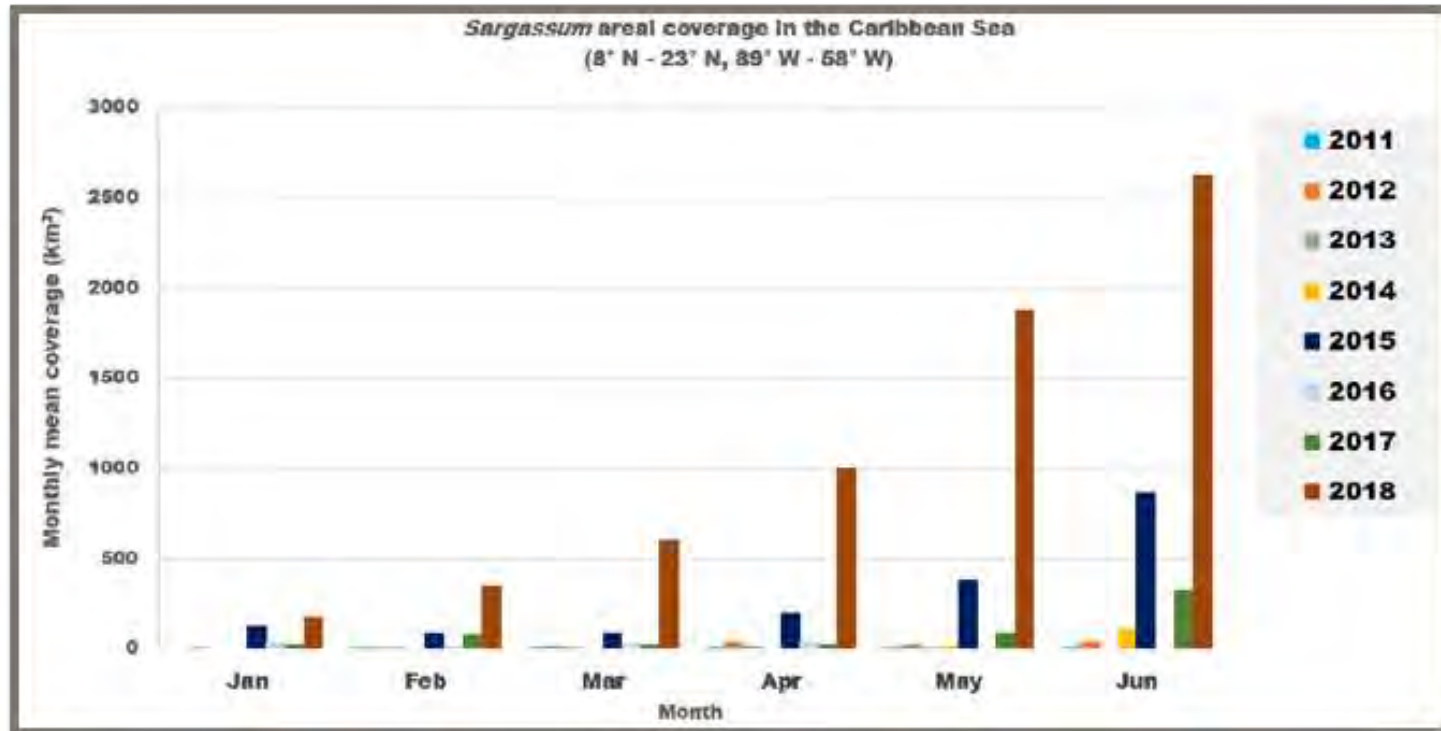
What is Sargassum?



(Image Source: WWW, 2018)ⁱ

- ❑ Floating masses of algae
 - ❑ Term (Sargassum) originally coined by Portuguese Sailors
 - ❑ Commonly associated with the Sargasso Sea where it is found in abundance
-
- ❑ A marine ecosystem
 - Reproduction haven and home to smaller species
 - Nursing habitat for larger fish species

The Sargassum Threat

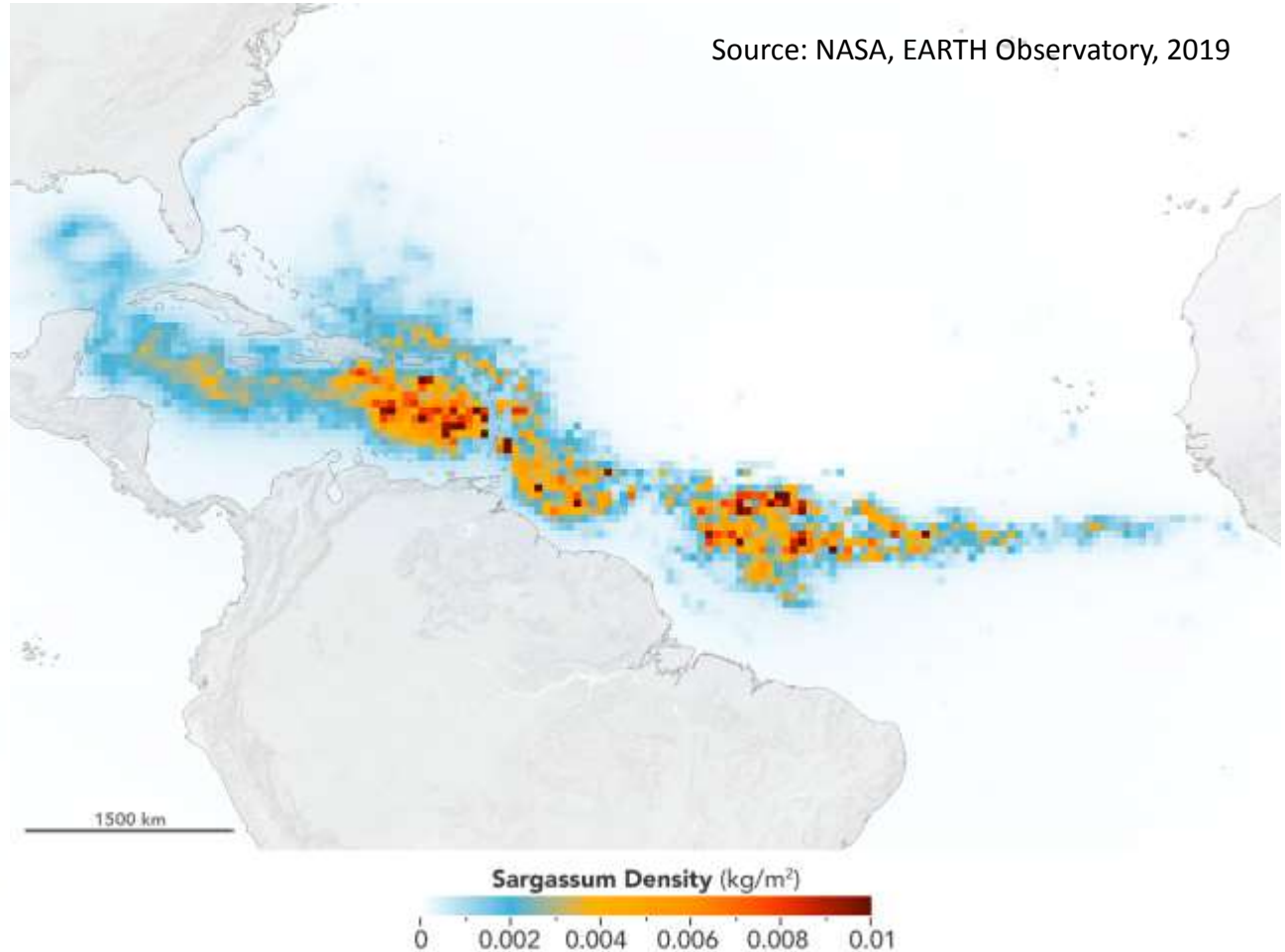


Source: (University of South Florida, 2019)

- ❑ Since 2011, SIDS of the Caribbean have seen an increasing abundance of Sargassum

The Sargassum Threat

Source: NASA, EARTH Observatory, 2019



- ❑ In excess of 20 million metric tonnes reported in June of 2018.

(Wang et.al., 2019)¹

The Sargassum Threat



- ❑ In overly abundant masses, Sargassum will impact marine life:
 - ❑ Entangle (suffocate) wild-life
 - ❑ Block beach nesting sites
 - ❑ Transport invasive species
 - ❑ Damage coral reef habitats

The Sargassum Threat

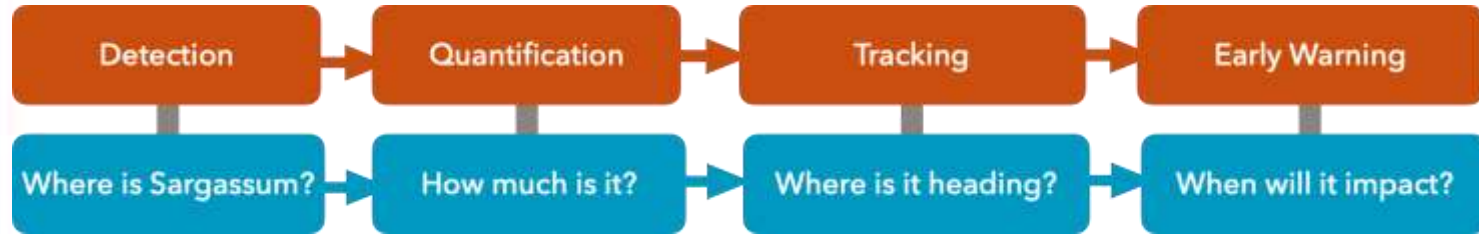


- ❑ In overly abundant masses it will also:
 - ❑ Impact fisheries and tourism:
 - ❑ Damage boat motors
 - ❑ Delay/prevent fishing launches

- ❑ Impact coastal environments
- ❑ Possible respiratory ailments
 - Hydrogen Sulphide (decomposed)
- ❑ Erodes beaches in clean up effort



Trending Early Warning Methodologies



- ❑ Optical Satellite data often used for detection
 - Example – Landsat, VIIRS, MODIS
- ❑ Modelling of ocean currents (direction and speeds) for landfall prediction

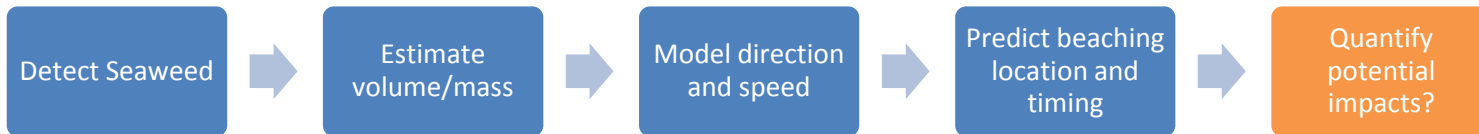
Examples

- ❑ Sargassum Watch System (SaWs)
 - Developed by University of Florida (Optical Oceanography Laboratory)
 - Produces monthly Sargassum impact forecast bulletins
- ❑ Sargassum Early Advisory System (SEAS)
 - Developed by Texas A&M University Galveston

The CIMH Research Proposal



The CIMH Research Proposal



Can the chain be extended to include quantification of impacts?

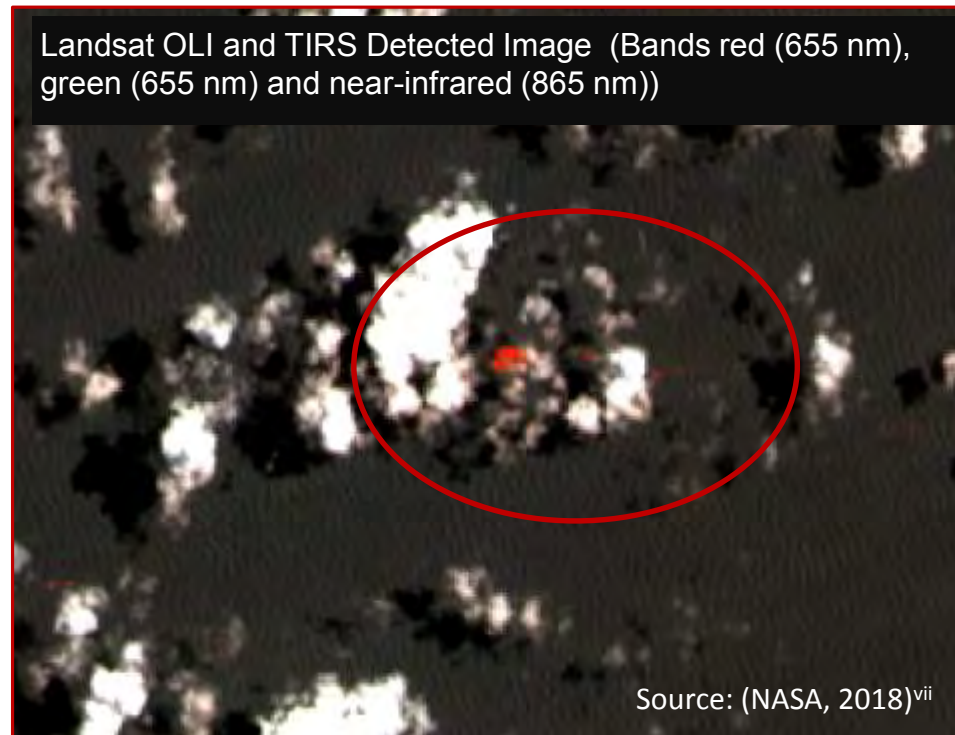
The CIMH Research Proposal

Why SAR?

Optical Imagery is typically used for Sargassum Detection

- ❑ Optical sensors rely on energy in the visible to the infrared portion of the electromagnetic wave spectrum
- ❑ Clouds reflect shorter wavelengths in this range of the spectrum
- ❑ Optical sensors cannot penetrate clouds and some may rely on sunlight to detect objects

Landsat OLI and TIRS Detected Image (Bands red (655 nm), green (655 nm) and near-infrared (865 nm))



Source: (NASA, 2018)^{vii}

The CIMH Research Proposal

Why SAR?

SAR for Sargassum Detection and Early Warning

Sentinel 1 detected image (processed from SLC image July 16, 2018)

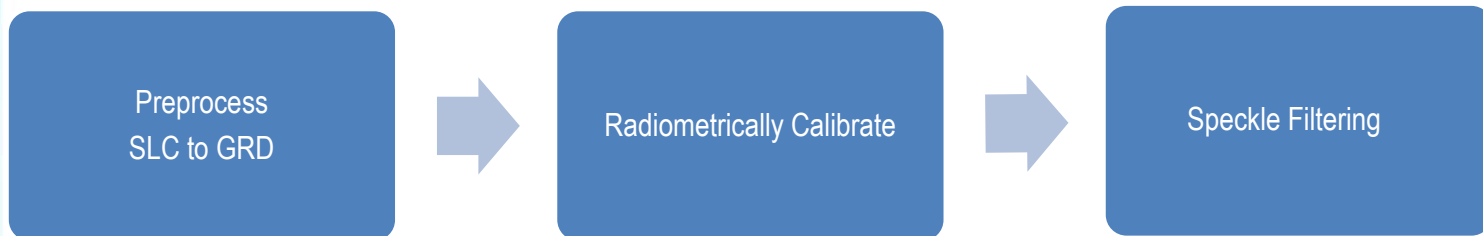


Source: (ESA, 2018)^{viii}

- ❑ SAR pulses penetrate cloud masses
- ❑ SAR sensors are also uninhibited by darkness
- ❑ Surface wind (direction and speed) data can be derived from SAR

Preliminary Research Results

Detection Process for SAR Images



- ❖ Speckle is reduced
- ❖ Creates square pixels
- ❖ Loses phase info
- ❖ Retains magnitude info

(ESA, 2019)³

- ❖ Create Sigma Nought (σ^0) bands – Strength of backscatter energy (db) per unit ground area
- ❖ Supports quantitative analysis of SAR image
- ❖ Makes corrections for inherent variations within components of the radar equation – a form of normalization

(Sarmap, 2009)⁴

- ❖ Further removal of speckle
- ❖ Easier to interpret features in the image

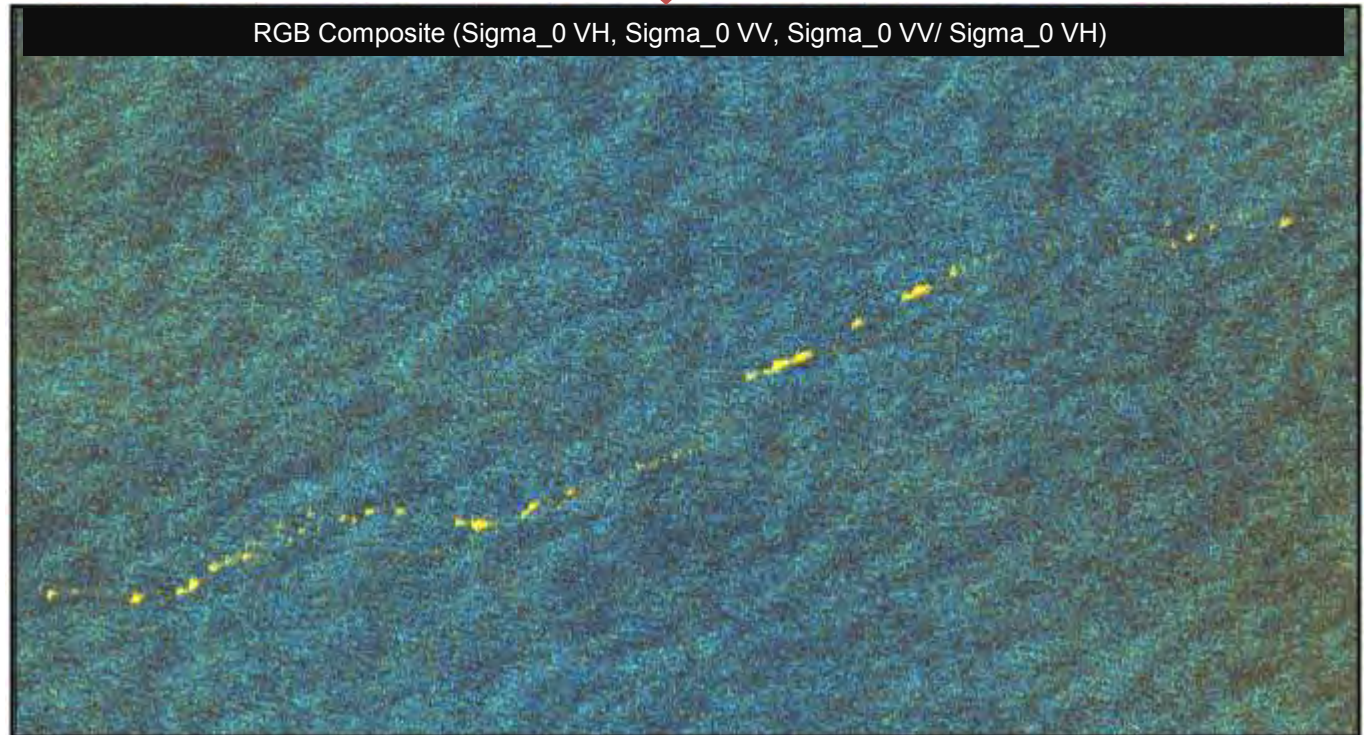
Preliminary Research Results

Detection Process for SAR Images

Sentinel 1 SLC image (June 4, 2018)

Source: (ESA, 2019)^{ix}

RGB Composite (Sigma_0 VH, Sigma_0 VV, Sigma_0 VV/ Sigma_0 VH)



Preliminary Research Results

Classification Process

Segment Mean Shift Analysis

Generate Signature Files

Supervised Classification

- ❖ Creates segmented regions across the pixels, thus simplifying the image

- ❖ Useful for separating pixels which represent different objects despite having similar values

- ❖ Makes classification step easier to accomplish

- ❖ Take training samples from segmented regions

- ❖ Statistically significant samples only!

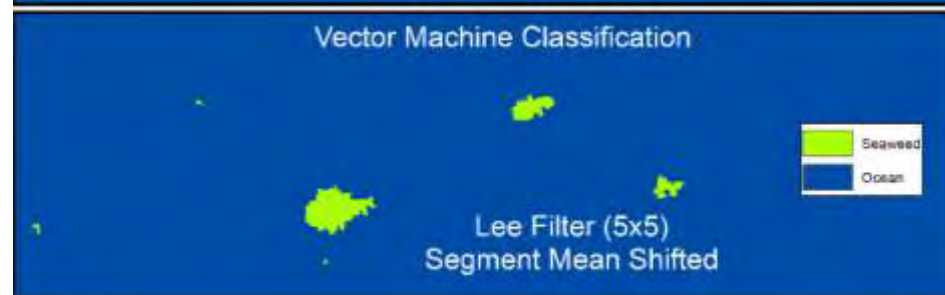
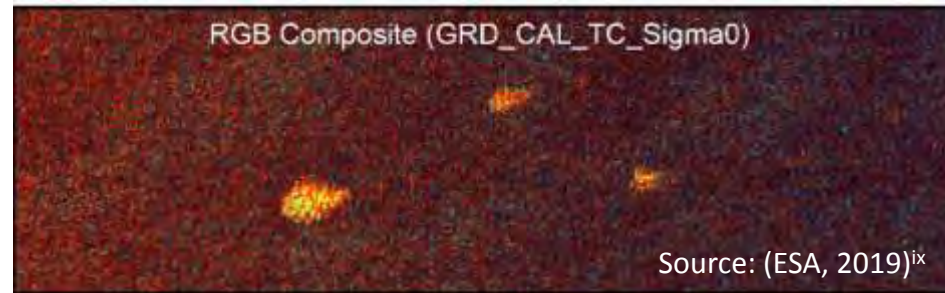
- ❖ Use samples to train various classification algorithms and create signature files

- ❖ Use signature files to test various classification routines

- ❖ Compare results

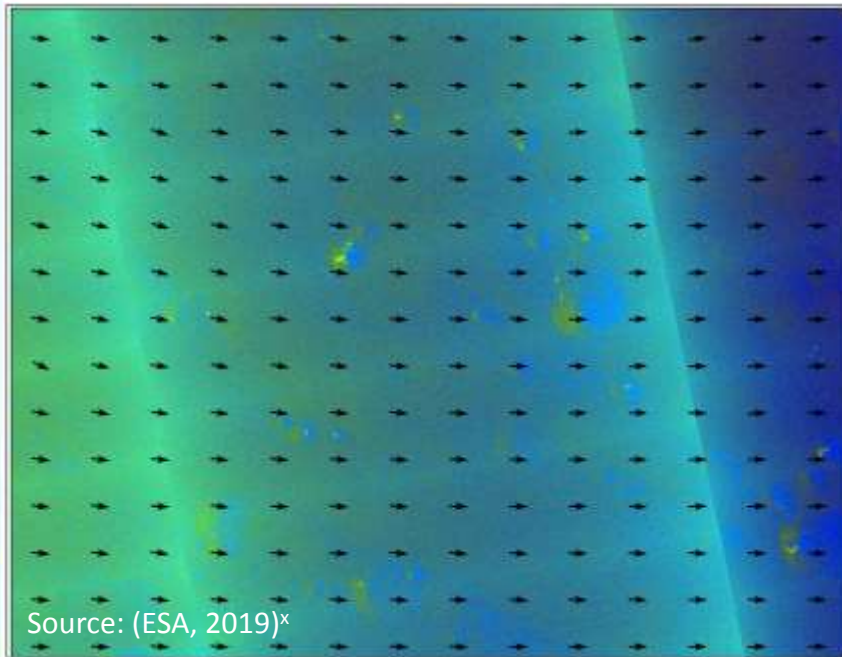
Preliminary Research Results

Classification Example



Next Steps

Modelling Movements



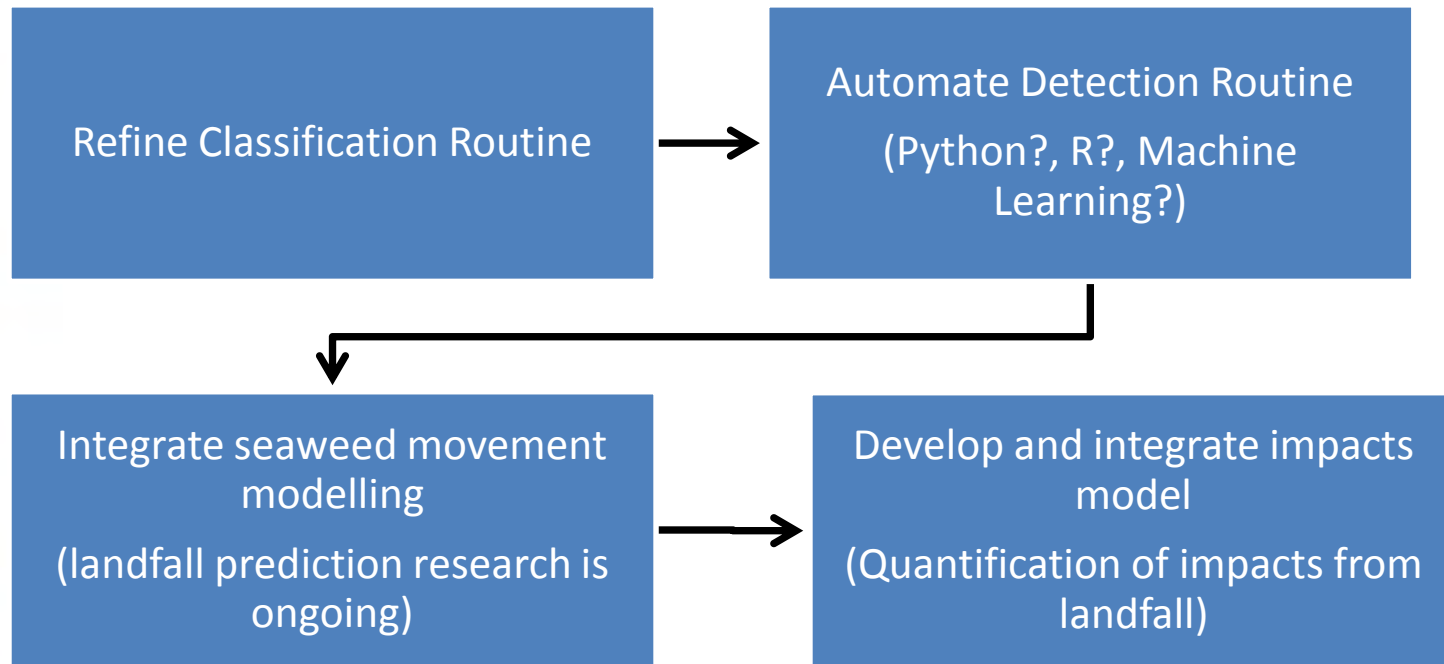
Surface wind direction as derived from Sentinel 1 OCN product

(Meteorological Convention)

- ❑ Research on techniques for surface wind (speed and direction) from SAR is underway
- ❑ These variables can serve as input to existing ocean current modelling approaches.

Next Steps

Roadmap to Operational Detection and Early Warning





Research Challenges

- ❑ We need more data!
 - ❑ Spatially and temporally compatible optical imagery needed for positive verification
 - ❑ Alternative SAR data sources required for improved detection and tracking efforts
 - ❑ Freely available repositories are often missing images for critical location and time stamps
 - ❑ Satellite tasking services are prohibitively expensive
- ❑ Sargassum mats are sometimes difficult to detect under rough sea conditions



Summary

We don't intend to reinvent the wheel but only to see where SAR can add value:

- Detection
- Tracking and prediction of movement

- We intend to take the research question a step further by quantifying Sargassum impacts after forecasting landfall.

- More data please!!!!
 - Spatially and temporally consistent data are required for verification
 - Alternative SAR and optical data sources are required for effective detection and tracking to account for gaps in repeat cycles



Questions??

Email: gniles@cimh.edu.bb

Web: www.cimh.edu.bb

Facebook: www.facebook.com/CIMHbb

Twitter: @CIMHbb

YouTube: www.youtube.com/user/CIMHTV



References

1. Wang, M., Hu, C., Barnes, B., Mitchum, G., Lapointe, B. and Montoya, J. (2019). The great Atlantic Sargassum belt. *Science*, 365(6448), pp.83-87.
2. Nation Publishing Co. Limited (2019). Sargassum a big threat to Caribbean economies. [online] Available at: <https://www.nationnews.com/nationnews/news/240606/sargassum-threat-caribbean-economies> [Accessed 16 Jul. 2019].
3. European Space Agency (2019). *Ground Range Detected - Sentinel-1 SAR Technical Guide - Sentinel Online*. [online] Available at: <https://sentinel.esa.int/web/sentinel/technical-guides/sentinel-1-sar/products-algorithms/level-1-algorithms/ground-range-detected> [Accessed 16 Jul. 2019].
4. Sarmap. (2019). [ebook] SAR-Guidebook, pg 88 - pg 94. Available at: <http://www.sarmap.ch/pdf/SAR-Guidebook.pdf> [Accessed 16 Jul. 2019].

References

Images and Data

- i. The South Carolina Department of Natural Resources (2018). *Sargassum*. [image] Available at: <https://oceanexplorer.noaa.gov/facts/sargassum.html> [Accessed 16 Jul. 2019].
- ii. NASA/Earth Observatory (2019). *Image/Map illustrating Sargassum biomass density within the "Great Atlantic Sargassum Belt"*. Image was generated with Data provided by Mengqiu Wang and Chuanmin Hu, USF College of Marine Science.. [image] Available at: <https://www.nasa.gov/feature/goddard/2019/nasa-satellites-find-biggest-seaweed-bloom-in-the-world> [Accessed 16 Jul. 2019].
- iii. Hakai Magazine (2018). [image] Available at: <https://www.hakaimagazine.com/news/the-eastern-caribbean-is-swamped-by-a-surge-of-seaweed/> [Accessed 16 Jul. 2019].





References

iv. Daniel, C. (2015). *Sea Turtle Drowned due to Sargassum Seaweed in Barbados..* [image] Available at:

<http://pearlradio.sx/2015/07/07/nature-foundation-warns-of-increased-influx-of-sargasso-seaweed-in-the-coming-weeks-concerned-with-the-effects-on-nesting-sea-turtle-populations/> [Accessed 16 Jul. 2019].

v. Caribbean Regional Fisheries Mechanism (2019). *Sargassum inundation.* [image] Available at:

http://crfm.int/~uwohxjxf/index.php?option=com_k2&view=itemlist&task=tag&tag=iuu%20fishing&Itemid=189http://crfm.int/~uwohxjxf/images/Sargassum_inundation_--_seen_here_in_Saint_Vincent_and_the_Grenadines_--_continues_to_affect_countries_across_the_Caribbean.jpg [Accessed 16 Jul. 2019].

vi. Barbados Sea Turtle Project (2018). *This year sargassum is again washing up on Caribbean shores.* [image] Available at:

<https://www.bbc.com/news/world-latin-america-45044513> [Accessed 16 Jul. 2019].



References

- vii. NASA (2018). *Data - (Landsat OLI and TIRS)*. [image] Available at: <https://earthexplorer.usgs.gov/> [Accessed 16 Jul. 2019].
- viii. European Space Agency (ESA) (2018). *Data – (Sentinel 1)*. [image] Available at: <https://scihub.copernicus.eu/dhus/#/home> [Accessed 16 Jul. 2019].
- ix. European Space Agency (ESA) (2018). *Data - Sentinel 1*. [image] Available at: <https://scihub.copernicus.eu/dhus/#/home> [Accessed 16 Jul. 2019].
- x. European Space Agency (ESA) (2019). *Data - Sentinel 1*. [image] Available at: <https://scihub.copernicus.eu/dhus/#/home> [Accessed 16 Jul. 2019].