

Interreg Caraïbes



Fonds européen de développement régional

SARG'COOP
Programme caribéen de coopération de
lutte contre les algues sargasses



ERISNet: Deep Neural Network for Sargassum detection along the coastline of the Mexican Caribbean

Javier Arellano-Verdejo Ph.D.

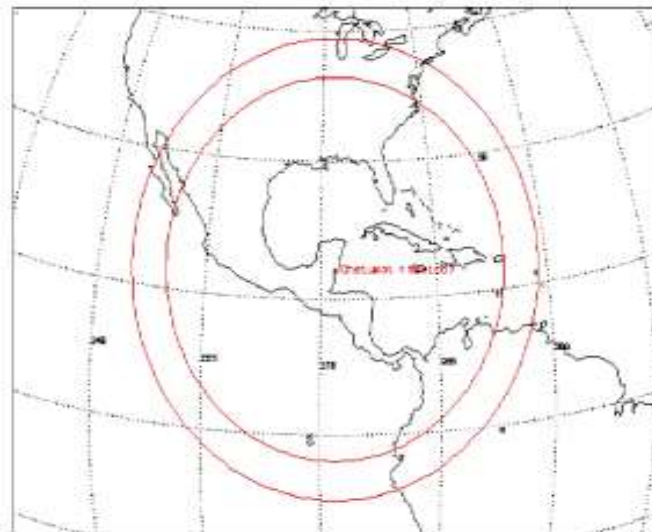
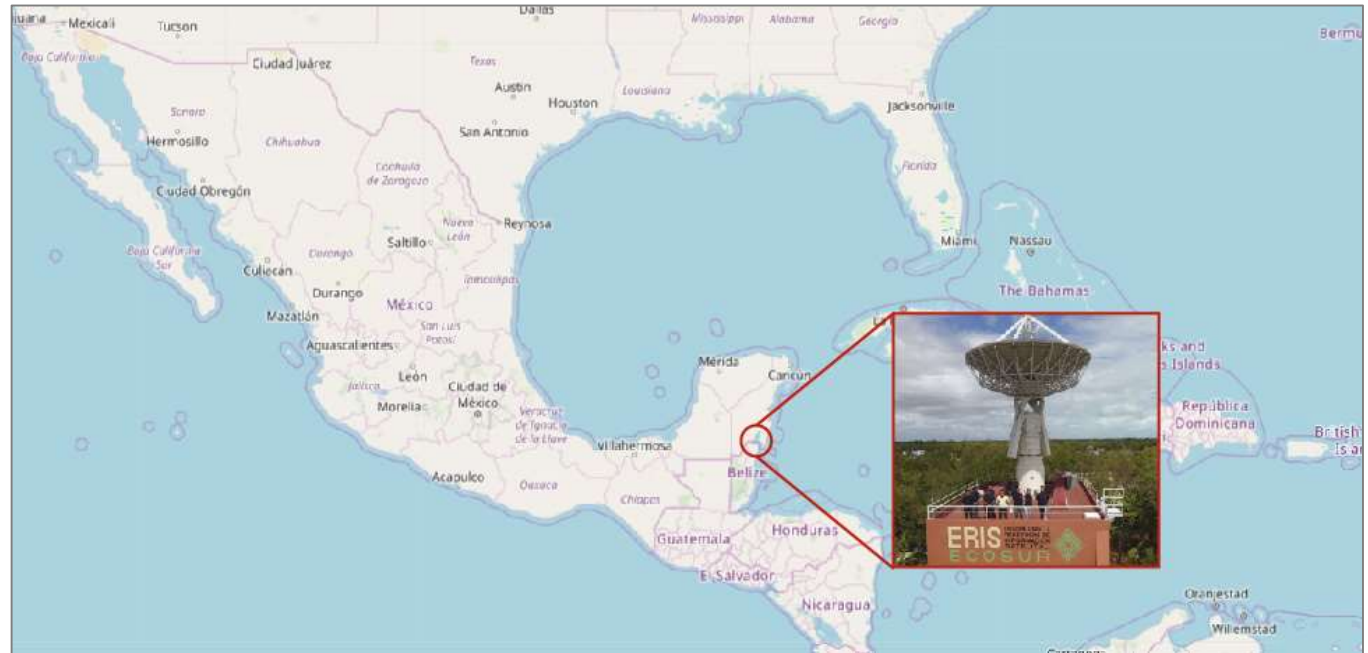
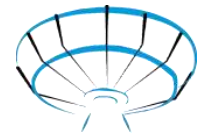
*Member of the Academic Group of the Station for the
Reception of Satellite Information ERIS-Chetumal*

El Colegio de la Frontera Sur, México

24/10/2019



About ERIS-Chetumal



Station Specs

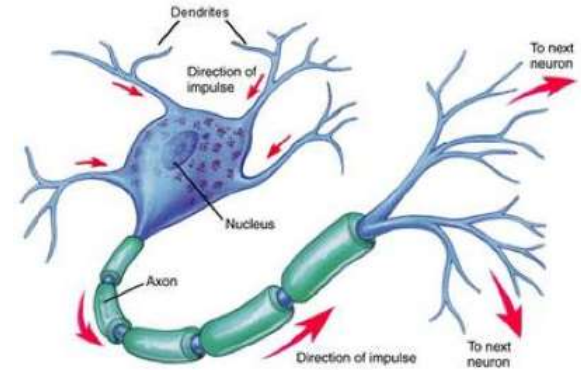
- Scalable station.
- Parabolic dish of 8 m.
- Download MODIS, Landsat
- Only ground satellite station in Mexico linked with a public research institute
- Associated Academic Group

What are artificial neural networks?

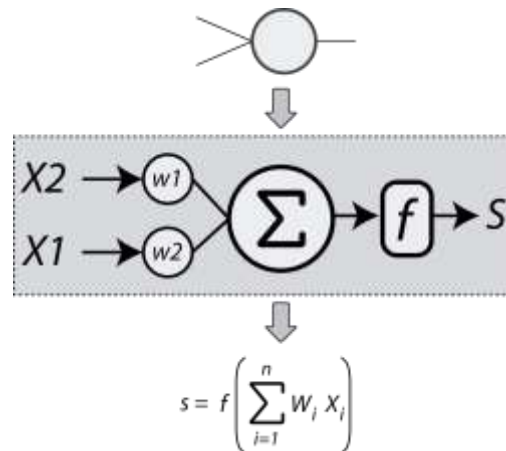
Inspired in biological nets



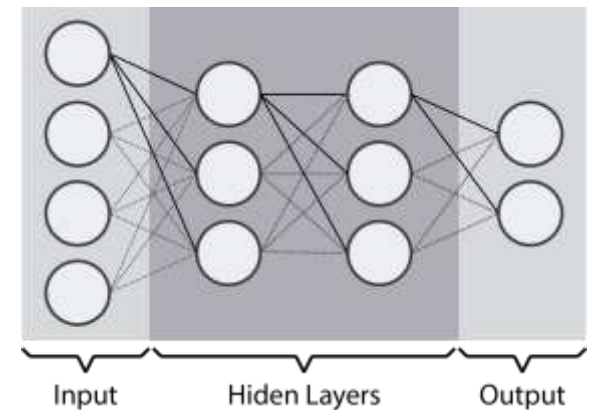
Basic neuron's scheme



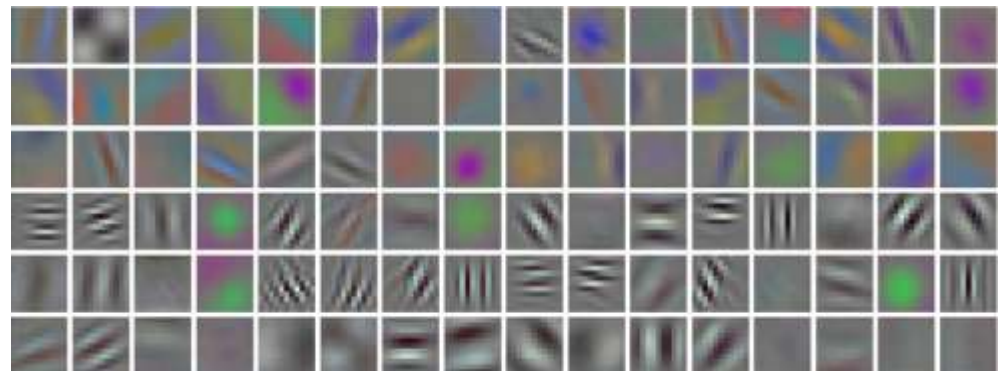
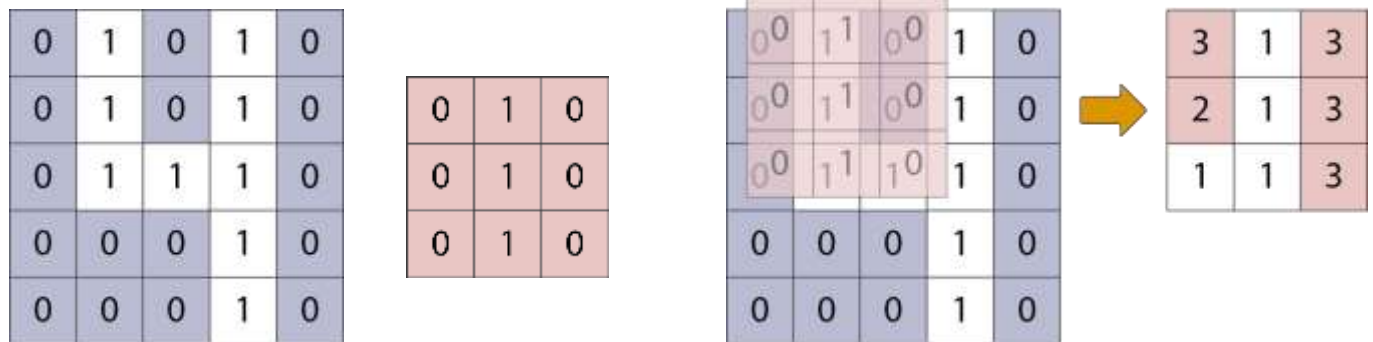
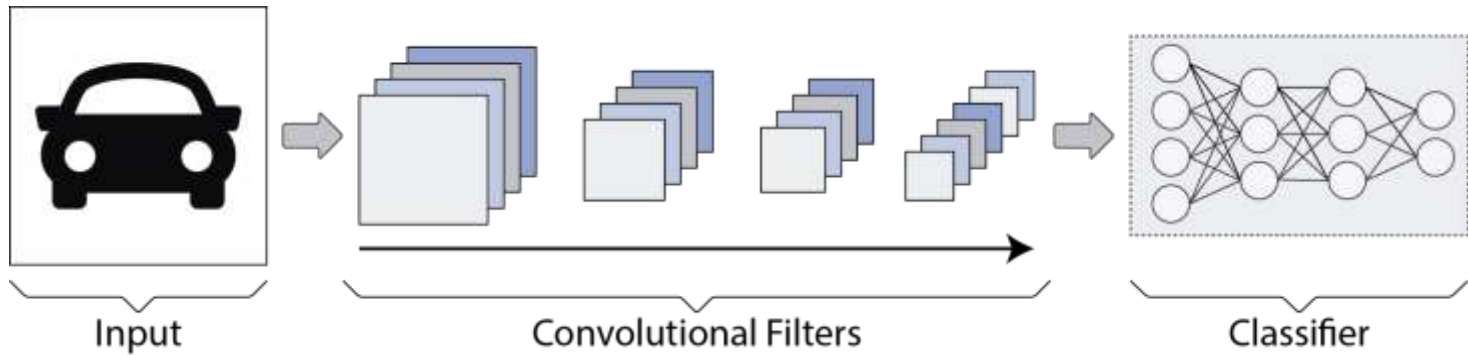
Artificial neuron



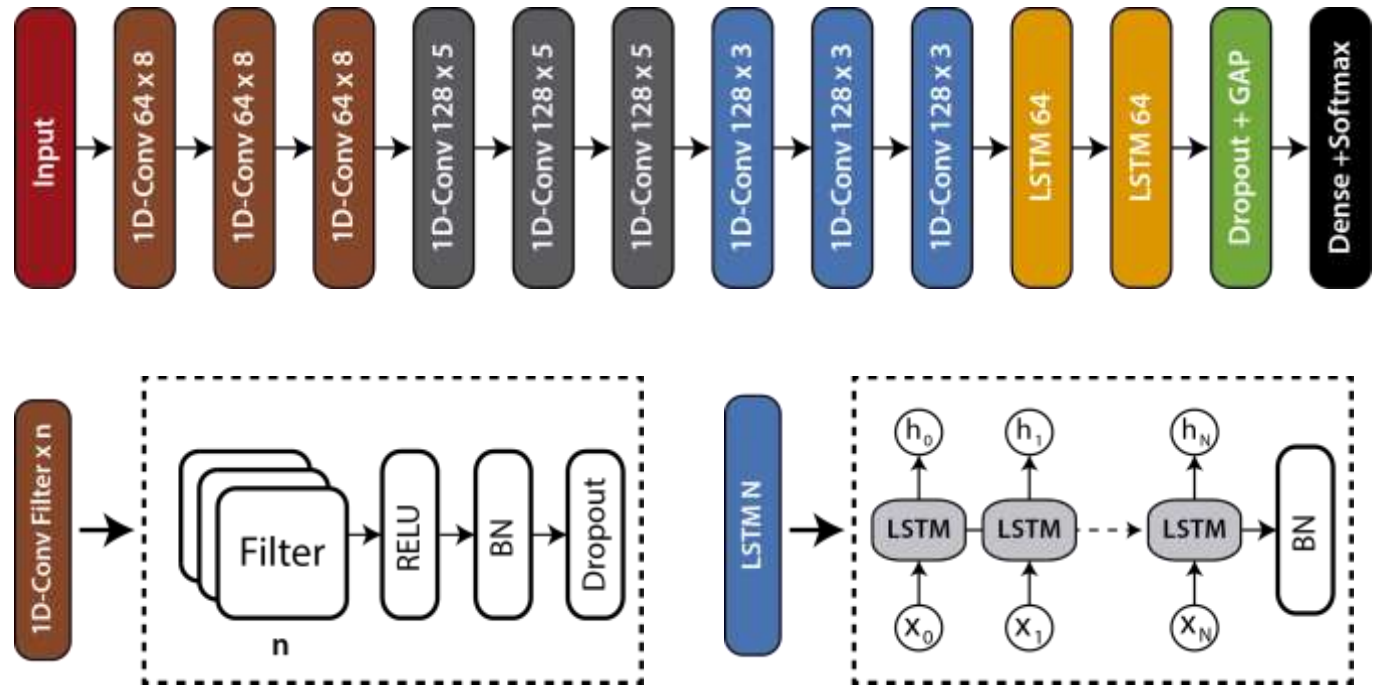
Artificial Neural Network



Convolutional Neural Networks?

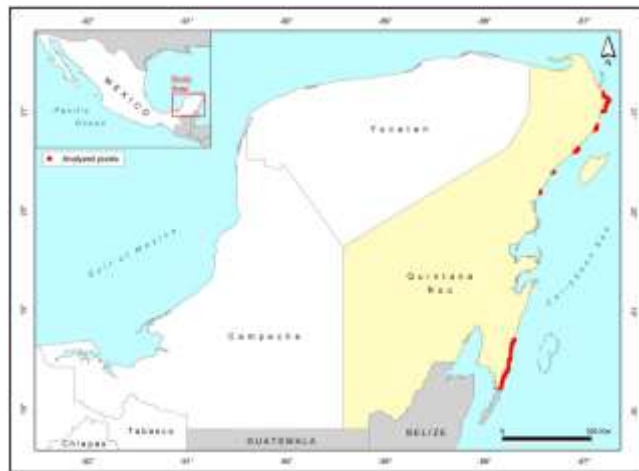


ERISNet Architecture

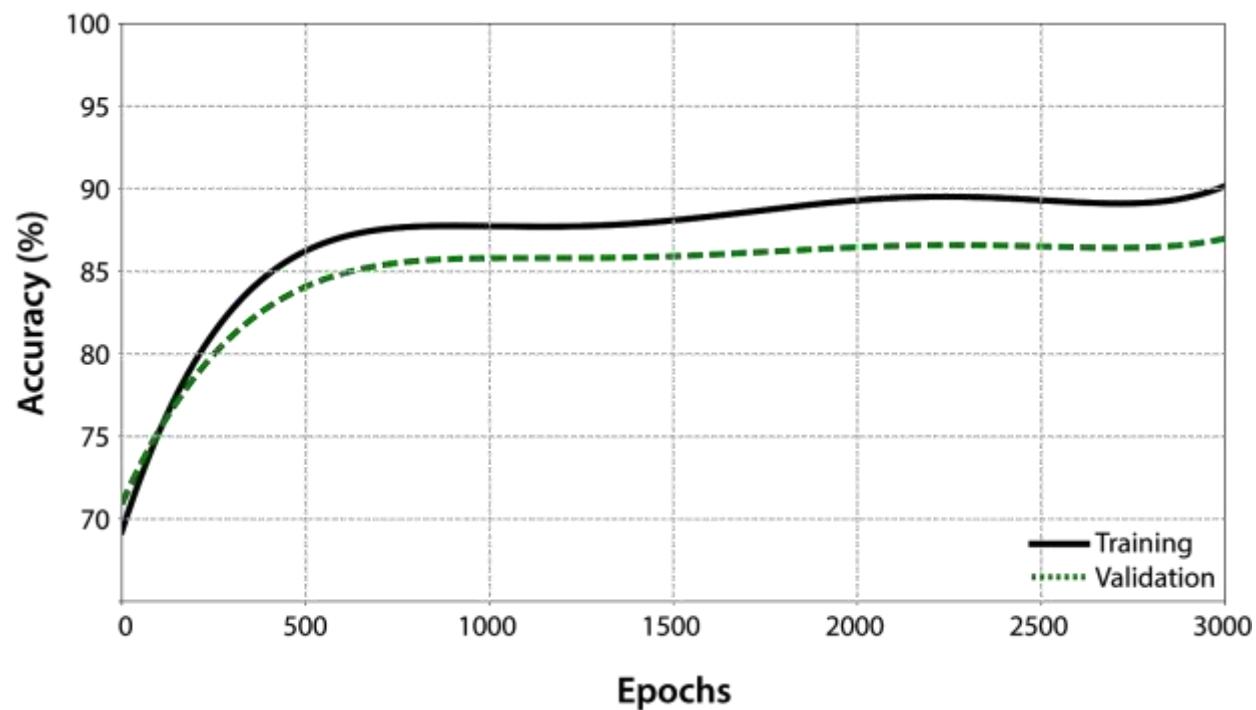


91 % Accuracy

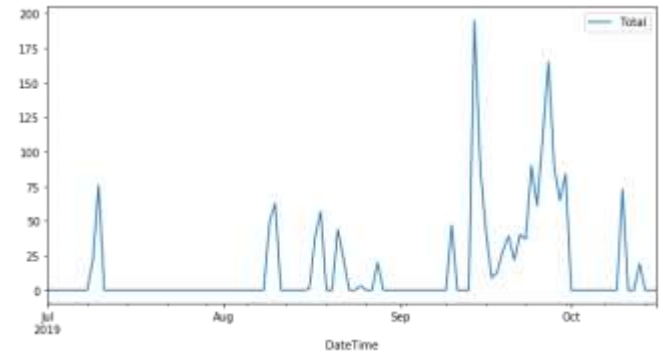
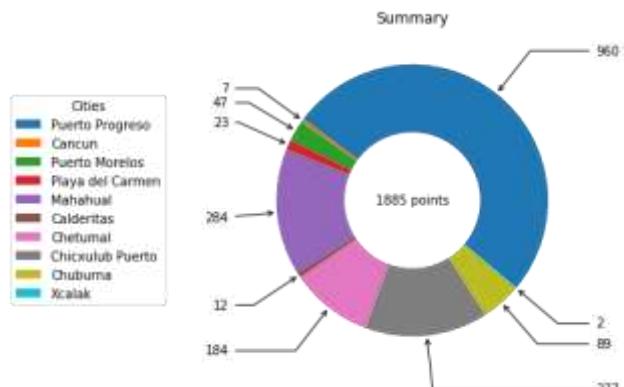
ERISNet training



Dataset features	
Attributes (7 rhos; 7 rhot)	14
Classes (presence / absence)	2
Instances with Sargassum	2306
Instances without Sargassum	2209
Instances (places at different dates)	4515
Total data	63210



Collective View



Other ERISNet applications

Red tide detection



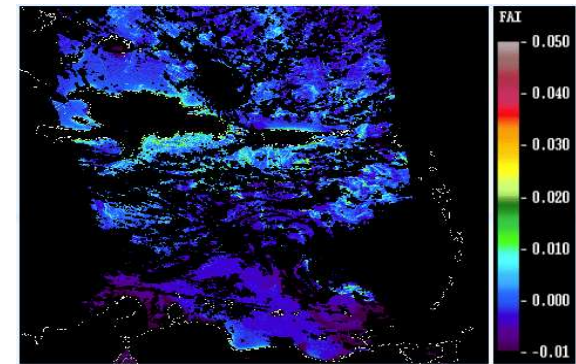
Oil spill detection



Forest fire analysis



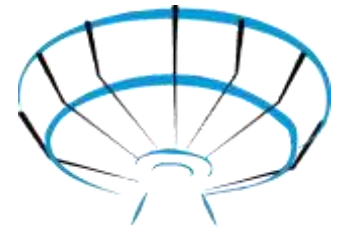
False positive detection



Thanks

Javier Arellano-Verdejo Ph.D.

javier.arellano@mail.ecosur.mx



ERIS-Chetumal

